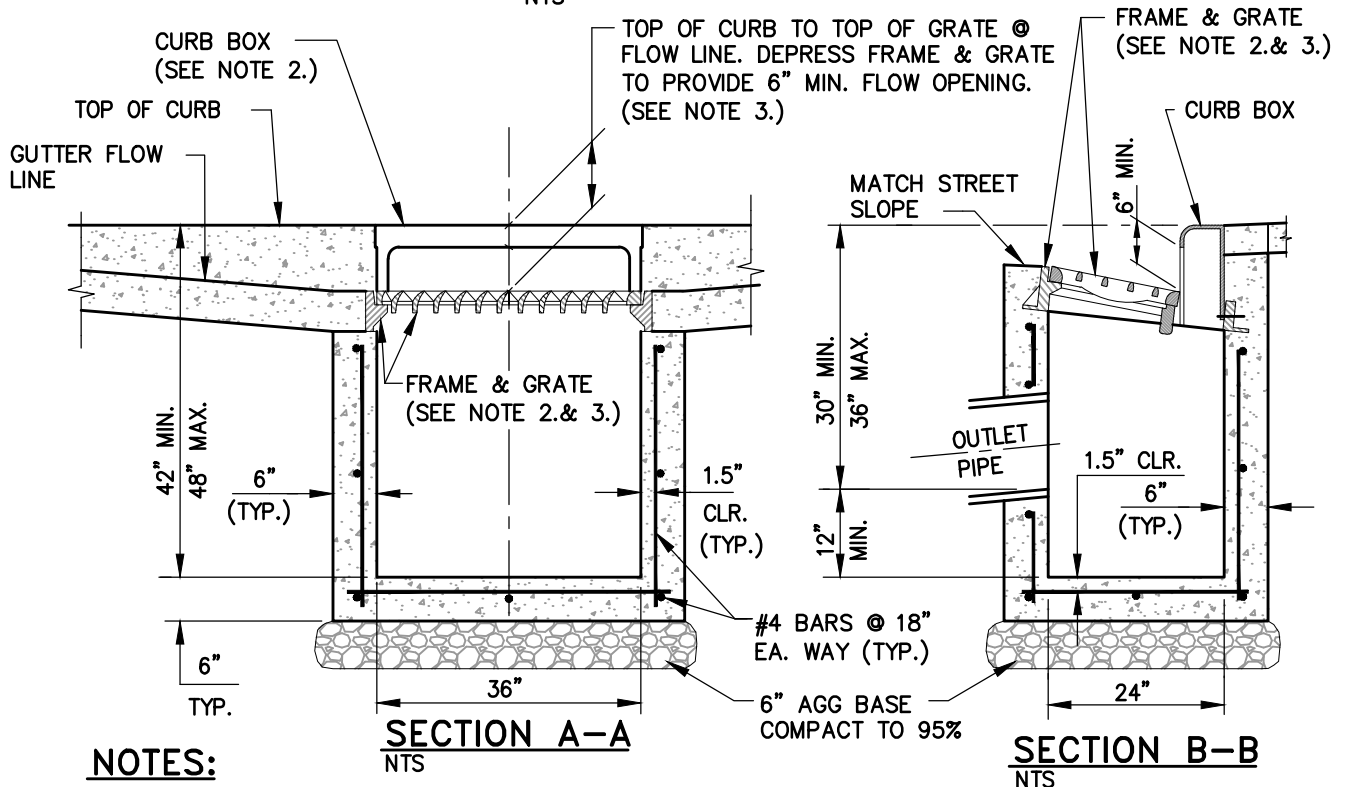


**PLAN**  
NTS



**NOTES:**

1. IF NO SIDEWALK IS PRESENT, POUR 6 INCH CONCRETE CURB STRUCTURE BEHIND GRATE AND TIE BEAM INTO BOX.
2. FRAME SHALL BE NEENAH R-3295 OR R-3067 SINGLE CURB UNIT WITH COMPLIANT TYPE L "VANE GRATE" AND CURB BOX, SOUTH BAY FOUNDRY VANE GRATE SOUTH BAY FOUNDRY 1947 OR APPROVED EQUAL, INSTALLED WITH PROPER FLOW DIRECTION.
3. TILT FRAME & GRATE AS REQUIRED TO ATTAIN 6 INCH MIN. FLOW OPENING & INSTALL DURABLE SHIMS BETWEEN THE CURB BOX & FRAME AS REQUIRED TO MATCH CURB BOX TO TOP OF CURB AND FACE OF CURB (SEE SECTION B-B).
4. CATCH BASIN TO BE INSTALLED OUTSIDE OF WALKING PATH. IF IT IS NOT POSSIBLE TO LOCATE CATCH BASIN OUTSIDE OF WALKING PATH THEN AN ADA COMPLIANT NEENAH MODEL DR/DL GRATE, SOUTH BAY FOUNDRY 1947-ADA OR APPROVED EQUAL SHALL BE USED UPON APPROVAL BY CARSON CITY ENGINEER OR PUBLIC WORKS DIRECTOR.

NO.	REVISION	DATE	STANDARD DETAIL FOR PUBLIC WORKS CONSTRUCTION	SECTION
			<b>CATCH BASIN TYPE 4-R</b>	CARSON CITY
				DRAWING NO. C-4.1.5
				DATE SEP 2017
APPROVED BY: 				9/17